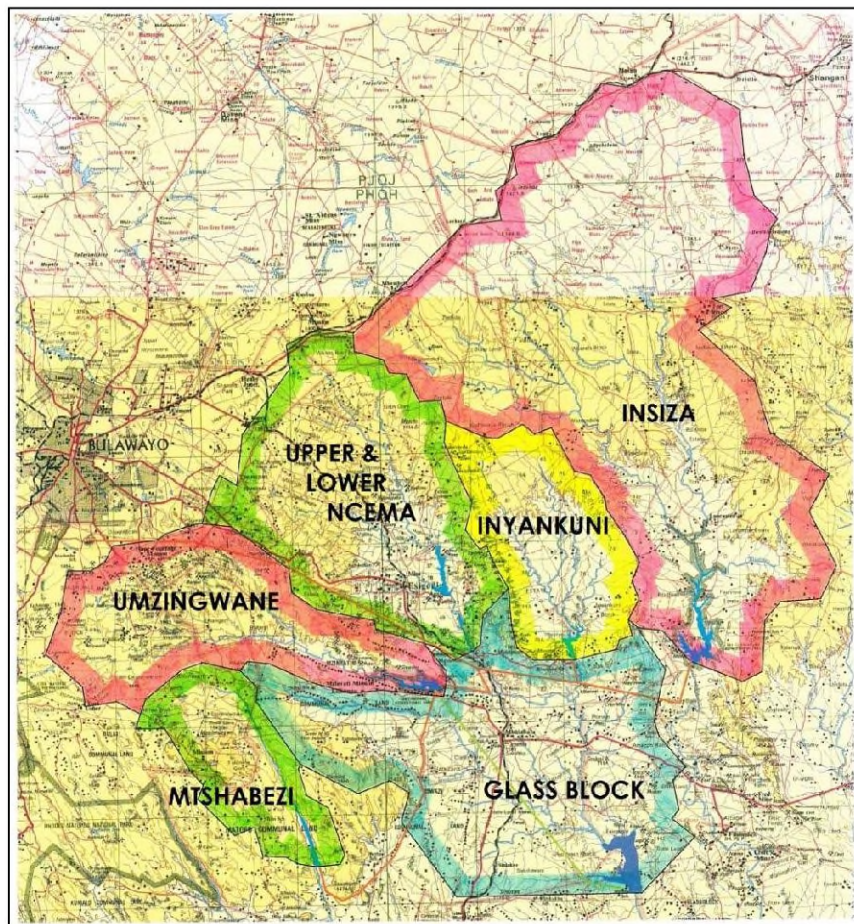


GLASSBLOCK DAM AND PIPELINE FOR BULAWAYO

EXECUTIVE SUMMARY

19 June 2024



1 Introduction

Bulawayo has suffered water shortages for many years, due to insufficient investment in viable primary storage, as well as under performance of the existing dams supplying Bulawayo with raw water.

Glassblock Dam was identified in 1988 as a prime source of water for Bulawayo. This proposal resurrects this plan, and with the addition of a pipeline is a potential solution to the water crisis in Bulawayo.

2 Mandate and Status of the Project

- At the Water Resources and Infrastructure Investment Conference on 25th June 2015 JRG was given the mandate to carry out a Prefeasibility Study of Glassblock Dam and Pipeline.
- The Prefeasibility Report was submitted to MoEWC on 25th August 2015.
- JR Goddard was granted the mandate from the MoEWC on 9th September 2017 to proceed with detailed project preparation and development of the bankable feasibility study in order to develop the Joint Venture in partnership with ZINWA. A copy of this letter is attached.
- The Feasibility Study was submitted to MoEWC on 29th May 2018 and the tender awarded to JRG in August 2019.

3 Next Steps

- Complete the Bankable Feasibility Study, which includes:
 - The water offtake agreement with Bulawayo City
 - The water permit from ZINWA
 - ZIDA will present this project to Cabinet, who can then approve the Finalisation of a Joint Venture Agreement for the Construction of Glassblock Dam and Pipeline.
- Raise funds and carry out construction of Glassblock Dam and Pipeline.

4 Outline of the Proposed Project

4.1 Bulawayo has a current suppressed water demand of 130MI per day. This is suppressed due to the shortage of water available for consumption, which comes from 6 dams south east of Bulawayo. Unsuppressed demand is estimated to be currently 165 Mlpd and in 20 years' time it is estimated to be in excess of 200Mlpd.

4.2 Glassblock Dam Site is about 70km south of Bulawayo on the Mzingwane River, downstream of Mzingwane Dam and the Ncema Dams. It is expected to yield 68Mlpd, which will provide the deficit on the current unsuppressed demand, and if implemented with other short term water resource projects, will supply Bulawayo with sufficient water until 2050.

The dam has already been designed by ZINWA engineers and is planned as a zoned earth fill embankment 2.5km long and maximum height 40m. Water from Glassblock Dam will be pumped 33km to the existing waterworks at Ncema, from where there is existing reticulation to Criterion Waterworks on the outskirts of Bulawayo.

4.3 Estimated projects costs are USD100million, which includes:

- Studies, designs, and permits to get the project to Financial Close.
- Construction of the dam, pipeline, and ancillary works.
- Financing costs.

4.4 Remaining work to Financial Close is expected to take 8 months. Securing finances and procuring the work packages will take 4 months. Construction of the Dam and pipeline will take 30 months.

4.5 The cost of water from Glassblock Dam pumped into the waterworks at Ncema will be USD0.90 per m³.

5 Company Structure

A company (Special Purpose Vehicle SPV) will be formed under the New Joint Ventures public private partnership structure between the Promoters, ZINWA and the equity investor as shareholders. This SPV will own and operate the dam for a concession period of 30 years, after which ownership will pass entirely to the Public Entities.

Sesani Private Limited is employed by JRG to progress the project to financial Close, and thereafter to manage the construction of Glassblock Dam and Pipeline.

6 Contact Information:

J R Goddard Contracting Private Limited

72 Bon Accord Road

Westerndale

Bulawayo

Zimbabwe

P O Box FM 797 Famona

Ph +263 9 79972-3

www.jrgzimbabwe.com

JRG

Jabulani Kuphela

Sesani Private Limited

60 The Chase

Mount Pleasant

Harare.

Ph: +263 4 307058-61

E: mike.peto@sesani.com

www.sesani.com

The logo for Sesani Private Limited features a stylized green and black wave-like symbol to the left of the word "sesani" in a bold, lowercase, sans-serif font.