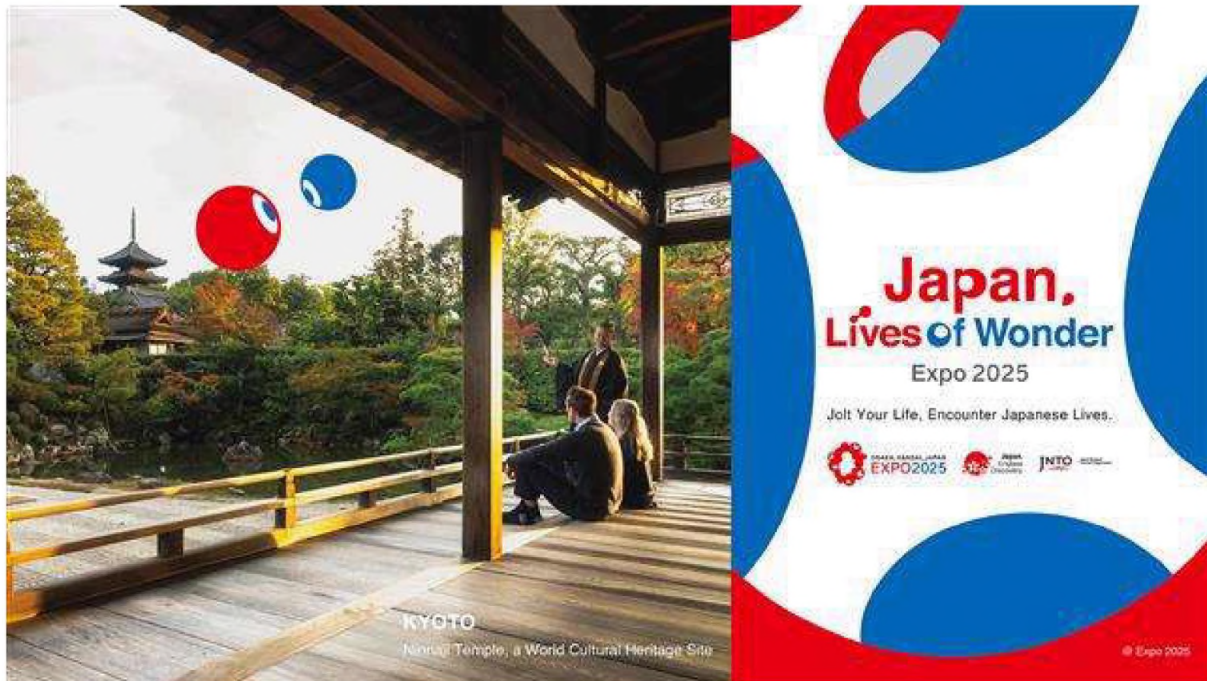




JAPAN TRAVEL UPDATES JNTO



Japan Travel Updates March 2025

News From JNTO



Educational Tools & Resources





News From Japan

Explore Shizuoka – Japan’s Green Tea Capital Hosts the 2025 World Tea Festival

Shizuoka, Japan’s green tea capital, invites tea lovers to immerse themselves in the World Tea Festival, held every three years in both spring and autumn. The Spring Festival (April 19 – May 21, 2025) coincides with the first tea harvest, offering hands-on experiences like tea picking and rolling, along with special tea-infused sweets and dishes at cafés across the prefecture. In autumn (October 23–26, 2025), the GRANSHIP convention center transforms into the World O-CHA Market, bringing together teas and utensils from around the world. Visitors can explore a tea farmer’s market, indulge in sweets and tea pairings, and take part in the ‘World Tea Party’, where international tea ceremonies and traditions come to life.

[Learn More](#)



Go Nagano – Exclusive Sake Experience in Nagano



Discover a new immersive sake experience in Nagano, Japan. Through a government-supported initiative, visitors can enjoy an exclusive **Private and Personalized Sake Brewery Tour** at Yukawa Sake Brewery—offering rare access to 370 years of craftsmanship and tradition. Limited to one group per day, the experience includes a private meal with the brewery owner, an expert-led sake tasting, and hands-on cultural activities like Edo-era herbal medicine and Oroku comb-making. Set in the breathtaking Kiso Valley, this **three-day, two-night journey** blends history, hospitality, and heritage for travelers seeking something truly special. [Learn More](#)

Fukui Prefectural Tourism Federation – Journey of "Connection"

Eiheiji Town has organically absorbed the teachings and spirit of the head temple, Eiheiji Temple, which is renowned as a Zen training monastery, and has cultivated these teachings into the local culture. Accompanied by a knowledgeable guide, you will be introduced to the local way of living and make your own connection with the teachings that have been fostered here. We will provide you with a journey that will transform your sense of being into one of gratitude and immersive cultural connection. Provided by The Fukui Hito Mono Design Co.,LTD
[Learn More](#) or [Contact](#) for details.



Hakone Tourism Association – Geisha Café & Bar Hana



At the Hakone Geisha Association's training hall, you can enjoy an authentic geisha experience, including traditional geisha performances and interactive games. Immerse yourself in the elegance of fan dances, playful parlor games, and the warm hospitality of real geisha. Don't forget to take a commemorative photo with them in their stunning kimono!

[Furatto Geisha Experience Details]

Chat and take photos with geisha, enjoy their dance performances and traditional games

Schedule: First & third Saturday of each month

Time: 8:00 PM (40-minute session)

Admission Fee: Adults (16+): ¥3,000

Children (6–15): ¥2,000

[Learn More](#) or [Contact](#) for more details

Kochi Prefecture – Extended Trip from Kansai

With the opening of Expo 2025 in Osaka just ahead, who needs ideas for extended trips from Kansai? Our special page featuring suggested routes from Osaka to Kochi has been updated to provide a better and deeper understanding of our destination - the complete list of activities available in English by region, interviews of those who await you, and more! Whether you have already planned your next trip to Japan or not, take a look to find out more about Kochi, Japan's Best Kept Secret.
[Learn More](#) or [Contact](#) for details.



Visit Kinosaki – Kinosaki Onsen: Kansai's Premier Sustainable Hot Spring Village



Visitors to the World Expo looking to escape the city bustle can travel to Kinosaki Onsen, a charming hot spring village near Osaka. Indulge in relaxation surrounded by the countryside, authentic onsen experiences, and a deep dive into Japanese culture.

[Learn More](#) or [Contact](#) for booking details.

Hotel Updates



[Hotel Granvia Hiroshima South Gate](#)

A New Base to Explore Setouchi



[MIMARU Osaka](#)

**The Best Family Stay at MIMARU Osaka –
Your Ideal Base for Exploring Kansai**



[Six Senses Kyoto](#)

Explore Kyoto

Transportation Updates



Alaska Air Group

Launches New Global Gateway in Seattle
Unveiling Nonstop Routes on
Hawaiian Airlines to Tokyo Narita



JAPAN AIRLINES

Japan Airlines

Daily Schedule Increase to Osaka
Starting July 18



National Geographic - Lindblad Expeditions
SAVE 5% TRAVELING AS A GROUP

Tour Updates

Asia Answers

[Enchanting Japan](#)

Agent commission varies, contact for details

Globus

[Visions of Japan](#)

Commission varies, contact for full details

Inside Japan Tours

[Must See Japan Small Group Tour including Osaka](#)

Agent Commission 12%

[Island & Cruise Adventure, Inc.](#)

Ogasawara Island: Japan's Galapagos - a one-week adventure to one of Japan's most remote and breath-taking destinations - Diving and land tour, 24 hours sailing from Tokyo

Contact: yasuko@islandcruiseadventure.com

Japan Deluxe Tours

[Family Fun! 10 Days Highlights Tour | Anime + Mario + Hello Kitty \(from \\$3,678\)](#)

Commissionable for travel agents, contact for full details

Mountain Travel Sobek

[Japan Kumano Kodo Walking Tour](#)

[10% commission on land portion](#)

NTA America Inc.

[Japan Discovery: 9 Day Tour](#)

Agent Commission 7%

Peony Tours

[Japan Discovery](#) & [Hokkaido Retreat](#) - Enjoy a **\$400 per person discount**

Travel agents receive **10% commission** based on the total tour fare paid by the customer

Remote Lands

[A Tohoku Summer: Hiking and Festivals](#)

Agent Commission 12%

Free Photos, Brochures,
Hotel Search and More!



Photo



Brochure



Mics



Video

THE FINE PRINT/LEGAL STUFF

Information is provided in this Japan Travel Update as a courtesy to readers of this newsletter. Though JNTO endeavors to ensure the information is accurate, users of the information are to act on such using their own judgment and at their own risk. Neither JNTO nor any holder of a copyright to the information shall be held responsible in any way whatsoever for any loss or misunderstanding, either direct or indirect, that is incurred as a result of utilizing the information.



Publisher: Japan National Tourism Organization

URL: www.japan.travel/en/us

New York Office (in even months)

250 Park Avenue, Suite 1900, New York, NY 10177

email: infonyc@jnto.go.jp

Los Angeles Office (in odd months)

6100 Center Drive, Suite 925, Los Angeles, CA 90045

email: infolax@jnto.go.jp

[View this email in your browser](#)

You are receiving this email because of your relationship with Japan National Tourism Organization. Please

[reconfirm](#) your interest in receiving emails from us. If you do not wish to receive any more emails, you can

[unsubscribe here](#).

This message was sent to jntonyc@jnto.go.jp by us_trade_newsletter@jnto.go.jp

Japan National Tourism Organization New York Office 250 Park Avenue, Suite 1900, New York, NY 10177 email:

infonyc@jnto.go.jp Los Angeles Office 707 Wilshire Blvd., Suite 4325, Los Angeles, CA 90017 email:

infolax@jnto.go.jp

 **VeriFed** Unsubscribe SM [Unsubscribe](#) | [Manage Subscription](#)





JAPAN TRAVEL UPDATES

February 2025

News From JNTO



Educational Tools & Resources



**Japan Safe Travel –
Stay Up to Date**



Japan.
Endless
Discovery.



News From Japan

Nara Prefecture - Mt. Yoshino's Cherry Blossom Spectacle

Journey to Nara this April and witness Mt. Yoshino's breathtaking display of 30,000 cherry trees in bloom. Experience cascading pink blossoms against a backdrop of sacred history and stunning mountain scenery.

[Learn More](#)



Shizuoka Prefecture - World O-CHA Festival



The 2025 World O-CHA Festival in Shizuoka (April 19 – May 21 & October 23 – 26) offers both unique experiences and partnership opportunities. Connect with 700,000+ tea lovers and explore the diverse world of tea.

[Learn More](#)

Fukuoka Prefecture - Mojiko Retro Seaside Train

Experience a charming retro train ride through Mojiko's scenic waterfront and Kanmon Strait. Enjoy open-air breezes and stunning tunnel projections. Runs weekends/holidays until March 31st.

[Learn More](#)



Hotel Updates



THE GATE HOTEL YOKOHAMA by HULIC

New Yokohama hotel offers stunning harbor views and a rooftop terrace with breathtaking cityscapes. Stylish rooms, vibrant dining, and easy access to Chinatown and local attractions await.

Transportation Updates



JAPAN AIRLINES

Explore More of Japan for Less with ANA's
Discover Japan Fare!

[LEARN MORE](#)

JAL Expands Inflight Wi-Fi Service to All
Cabins

[LEARN MORE](#)



SAVE 5% TRAVELING AS A GROUP

[LEARN MORE](#)

Free Photos, Brochures,
Hotel Search and More!



Photo



Brochure



Mics



Video

THE FINE PRINT/LEGAL STUFF

Information is provided in this Japan Travel Update as a courtesy to readers of this newsletter. Though JNTO endeavors to ensure the information is accurate, users of the information are to act on such using their own judgment and at their own risk. Neither JNTO nor any holder of a copyright to the information shall be held responsible in any way whatsoever for any loss or misunderstanding, either direct or indirect, that is incurred as a result of utilizing the information.



Publisher: Japan National Tourism Organization

URL: www.japan.travel/en/us

New York Office (in odd months)
250 Park Avenue, Suite 1900, New York, NY 10177
email: infonyc@jnto.go.jp

Los Angeles Office (in even months)
6100 Center Dr, Suite 925, Los Angeles, CA 90045
email: infolax@jnto.go.jp

[View this email in your browser](#)

You are receiving this email because of your relationship with Japan National Tourism Organization. Please [reconfirm](#) your interest in receiving emails from us. If you do not wish to receive any more emails, you can [unsubscribe here](#).

This message was sent to jntonyc@jnto.go.jp by us_trade_newsletter@jnto.go.jp

Japan National Tourism Organization New York Office 250 Park Avenue, Suite 1900, New York, NY 10177 email: infonyc@jnto.go.jp Los Angeles Office 707 Wilshire Blvd., Suite 4325, Los Angeles, CA 90017 email:

infolax@jnto.go.jp

Verified Unsubscribe SM [Unsubscribe](#) | [Manage Subscription](#)





JAPAN TRAVEL UPDATES JNTO



Japan Travel Updates January 2025

News From JNTO



Educational Tools & Resources





Japan Travel Safe Twitter

News From Japan

Explore Shizuoka – Early Blooming Cherry Blossoms!

Shizuoka's renowned green tea culture is an experience you can't miss! Dive into Matcha Calligraphy, a unique fusion of tradition and creativity where matcha replaces ink. Guided by a master, you'll craft your own Kanji scroll at the cozy MARUZEN Tea Roastery, just a short walk from Shizuoka Station. It's the perfect way to create a memorable souvenir while soaking up the essence of Japan's tea heritage!

[Learn More](#)



Fukui Prefecture – Echizen Craft Experience



The Echizen Sabae area makes up a critical production area for traditional crafts in Fukui. It produces Echizen lacquerware, washi, knives, chests, pottery, glasses and textiles. It's an extremely rare area where seven industries have gathered within just a 6-mile radius. On Craft Invitation tours, travelers can spend time interacting with craftspeople in their factories. You can spend a day creating a knife, making washi, or lacquering a bowl with local artisans. By the end, you'll have crafted something yourself, as well as have a memory to carry home.

[Learn More](#) or [Contact](#) for booking details.

Kochi Prefecture – Yosakoi Festival

Yosakoi Dance is an energetic style of group dancing that originated in Kochi. Performance with music based on folk-songs and dancers in elaborate, colorful costumes, transforms any place into a vibrant stage anytime! Although there are many occasions to watch this dance throughout the year in Kochi Prefecture, the biggest in scale and the most popular one is the *Yosakoi* Festival held in Kochi City from August 9-12 every year. If anyone wants to join in the fun, there are teams which accept walk-ins so why not try and be part of the vibrant atmosphere!

[Learn More](#) or [Contact](#) for details.



Kyoto City Tourism – Hidden Gems of Kyoto: Yamashina in Spring



Nestled on the east side of Kyoto, Yamashina offers a perfect blend of history and natural beauty just a short 5-minute train ride from Kyoto Station! Step back in time to over 25,000 years of history while cruising along the scenic Biwako Sosui canal, built in 1890. This hidden gem also boasts secret cherry blossom spots, offering a serene and unforgettable experience away from the crowds. Whether you're a history buff or nature lover, Yamashina is an exciting and accessible destination! [Learn More](#)

Visit Kinosaki – 50 Minutes from Kinosaki Onsen, Private Izushi Castle Town Tour (with English-speaking guide)

Experience the rare chance to tour a Kabuki theater in Izushi Castle Town with a local guide. Go on a backstage tour of Eirakukan Kabuki Theater, and explore behind, under, and above the stage! Izushi is Toyooka City's quiet castle town home to retro stores, memorable attractions, and unique specialties. In Izushi, you will also have the chance to explore the Izushi Castle Ruins, Shinkoro Clock Tower, Samurai House Karoyashiki, and more! Pick up and drop off to and from Kinosaki Onsen included.

[Learn More](#) or [Contact](#) for booking details.

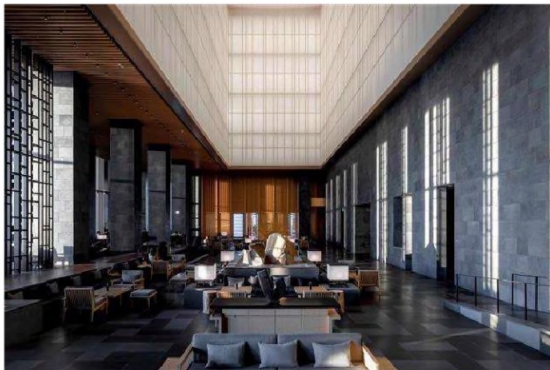


Yokohama City Visitors Bureau – OTABISHO Yokohama Nohgakudo



OTABISHO Yokohama Nohgakudo is a cultural venue dedicated to the traditional Japanese performing art of “Noh and Kyogen”. This classical form of theater, with its distinctive costumes, wooden masks, and stylized movements, is an integral part of Japan’s cultural heritage. Visitors can explore the tools of Noh and Kyogen, and also purchase souvenirs such as Tenugui (a multipurpose cloth printed with traditional Japanese designs) and Kinchaku (a drawstring bag). Additionally, the venue hosts occasional workshops, offering international audiences a journey into this traditional art form. It opens until March, 2026. [Learn More](#) or [Contact](#) for details.

Hotel Updates



[Aman](#)

Aman Japan Journey



[Hotel Chinzanso Tokyo](#)

The Pagoda in the Clouds: Hotel Chinzanso Tokyo Celebrates 100 Years of a Historic Landmark



[Hotel Granvia Kyoto](#)

Enjoy all things Strawberry at Hotel Granvia Kyoto



[MIMARU SUITES Tokyo Asakusa](#)

Family-Friendly 2-Bedroom Suites in the Asakusa Area

Transportation Updates



All Nippon Airways
Explore More of Japan for Less with
ANA's Discover Japan Fare!



JAPAN AIRLINES

Japan Airlines
JAL Expands Inflight Wi-Fi Service
to All Cabins



National Geographic - Lindblad Expeditions
SAVE 5% TRAVELING AS A GROUP

Tour Updates

Alluring Asia

[Resonating Rhythms: A Cultural Tour of Japan's Performing Arts](#)

Commission Information: 12%

Friendly Planet Travel

[Best of Japan](#)

Commissionable, inquire for full details

Globus

[Visions of Japan](#)

Commission varies, contact for full details

Inside Japan Tours

[Music, Theater, and Dance on a Cultural Adventure](#)

Agent Commission 12%

[Island & Cruise Adventure, Inc.](#)

Shark City Diving Tateyama

Contact: yasuko@islandcruiseadventure.com

Japan Adventure Travel DMC

[Pilgrimage to Sacred Sites in Japan](#)

Please inquire directly for the rate and details

Japan Deluxe Tours

[10 Days Essence of Spring | Anime + Mario World + Hello Kitty \(from USD 3,998\)](#)

Commissionable for travel agents, contact for full details

JTB USA Inc.

[Embracing True Japan: Nakasendo Trail, Onsen and World Heritage in Gifu](#)

For commission details, please inquire with JTB USA

Mountain Hiking Holidays

[Shikoku Temple Trek 1: Hiking Temple to Temple in the Lost Japan](#)

Travel Agent Commission 10%

Mountain Travel Sobek

[Japan Kyoto to Tokyo Walking](#)

[10% commission on land portion](#)

Yakushima Nest Tours

[5-day/4-night Yakushima Guided Trekking Tour](#)

Please inquire directly for commission details

**Free Photos, Brochures,
Hotel Search and More!**



Photo



Brochure



Mics



Video

THE FINE PRINT/LEGAL STUFF

Information is provided in this Japan Travel Update as a courtesy to readers of this newsletter. Though JNTO endeavors to ensure the information is accurate, users of the information are to act on such using their own judgment and at their own risk. Neither JNTO nor any holder of a copyright to the information shall be held responsible in any way whatsoever for any loss or misunderstanding, either direct or indirect, that is incurred as a result of utilizing the information.



Publisher: Japan National Tourism Organization

URL: www.japan.travel/en/us

New York Office (in even months)
250 Park Avenue, Suite 1900, New York, NY 10177
email: infonyc@jnto.go.jp

Los Angeles Office (in odd months)
6100 Center Drive, Suite 925, Los Angeles, CA 90045
email: infolax@jnto.go.jp

[View this email in your browser](#)

You are receiving this email because of your relationship with Japan National Tourism Organization. Please [reconfirm](#) your interest in receiving emails from us. If you do not wish to receive any more emails, you can [unsubscribe here](#).

This message was sent to nycdirectors@jnto.go.jp by us_trade_newsletter@jnto.go.jp

Japan National Tourism Organization New York Office 250 Park Avenue, Suite 1900, New York, NY 10177 email:

infonyc@jnto.go.jp Los Angeles Office 707 Wilshire Blvd., Suite 4325, Los Angeles, CA 90017 email:

infolax@jnto.go.jp

 [Unsubscribe](#) | [Manage Subscription](#)





JAPAN TRAVEL UPDATES JNTO



© Mit Jal Inn / JIm Thompson Foundation (Exhibition reference Image for Aichi Triennale 2022)

Japan Travel Updates May 2025

News From JNTO



Educational Tools & Resources





Japan Travel Safe Twitter

News From Japan

(Fukui) Katsuyama DMO – Echizen Daibutsu Sea of Clouds Special Viewing

Katsuyama City in Fukui Prefecture is home to Daishizan Seidaiji Temple, which happens to feature the Echizen Great Buddha, one of Japan's largest Buddha statues. Visitors to the temple in mornings or late afternoons from April to late November can encounter a rather unique sight after passing through the main gate, an artificial sea of white clouds enveloping the area before the Great Buddha Hall. This transforms the temple grounds into a mystical landscape, creating an otherworldly atmosphere reminiscent of ancient hermit dwellings. The sea of clouds is generated daily from 8:00-9:00 and 16:00-17:00, and depending on the season and time of day, the scenery creates very different impressions.

[Learn More](#)



Visit Kinosaki – Enjoy Art and Hot Springs at the Toyooka Theater Festival



The Toyooka Theater Festival is one of the largest events of its kind in Asia. Hosting performances in various languages, the festival provides a sense of belonging and community among fellow art lovers who visit the area, regardless of language. The beauty of Northern Hyogo Prefecture serves as a stage for artists during the Theater Festival's fringe programs. In addition to Director's program multilingual performances, the Toyooka Theater Festival continues to make accessibility to art a main priority of its mission by holding public fringe programs around Northern Hyogo. Coupled with the natural and dramatic beauty of locations such as Takeno Beach and Kinosaki Onsen, visitors can enjoy performances ranging in diversity from interpretive dancing to traditional plays.

[Learn More](#) or contact info@toyooka-tourism.com

Kochi Prefecture – Niyodo Blue Tourism

Transportation can be one of the concerns traveling in rural Japan, especially for those traveling solo or who are not confident in driving in the unfamiliar area. Don't make it the reason to change your itinerary! Niyodo Blue Tourism Council is offering various sightseeing taxi plans with fixed or customized course and the reservation site in English now available! Plans include not only popular spots to enjoy the miraculous clear stream of Niyodo River but also cultural activities such as sake tasting, washi paper making and visit to one of Shikoku 88 Temple Pilgrimage.

[Learn More](#) or contact kanko@niyodoblue.jp



Kyoto City Tourism Association – Hidden Gems of Kyoto: Ohara



Escape to Ohara, a tranquil mountain retreat just outside central Kyoto, where centuries-old temples, mossy gardens, and fresh mountain air await. Wander through the serene grounds of Sanzen-in and Jakko-in, or head up to Mt. Hiei to explore the sacred Enryaku-ji Temple, a UNESCO World Heritage Site with panoramic views. In autumn, catch the Ohara Women's Historical Parade, and don't miss a peaceful moment in Ruriko-in, where maple leaves frame one of Kyoto's most photogenic temples.

[Learn More](#)

Yokohama City Visitors Bureau – ZOU-NO-HANA TERRACE: A Cultural Gateway

Located in Zou-no-hana Park—named after the pier's elephant trunk-like shape—Zou-no-hana Terrace is a hub where Japanese and international cultures meet. Throughout the year, it hosts diverse programs in art, music, and performance that foster creativity and connection. The adjoining café offers stunning harbor views and original dishes made with local ingredients, including craft beer. As an "artist café," it blends food and cultural exchange in unique ways. Don't miss the whimsical Zou-no-hana soft serve, shaped like an elephant's trunk. Experience a modern take on cultural exchange in this historic and creative waterfront space. [Learn More](#) or [Contact](#)



Photo:Hajime Kato

Hotel Updates



The Hotel Seiryu Kyoto Kiyomizu

Traditional Experiences Exclusively for Staying Guests



Imperial Hotel

Imperial Serenity



JR-West Hotels

Celebrate Expo 2025 with Gourmand Expo at Hotel Granvia Osaka & Hotel Vischio Osaka!



Apartment Hotel MIMARU

Experience Pokémon in a Unique Stay



Sui Hotels

Discover Japan's Ancient Capitals – Kyoto & Nara

Transportation Updates



JAPAN AIRLINES

All Nippon Airways
Redefining Passenger Comfort

Japan Airlines
New A350-1000 Service from Los Angeles
Starting June 30



Singapore Airlines
Enjoy Special Fares to Tokyo for a Limited Time



Costa Cruises
JNTO Exclusive Offer



National Geographic - Lindblad Expeditions
Redefining Passenger Comfort

Tour Updates

Alluring Asia
[Triennales and Temples: Japan's Immersive Art Odyssey](#)
Travel agent commission 12%

All Japan Tours
[Japan By Sea with Highlights](#)
Commissionable

Globus
[Visions of Japan](#)
Commission varies, contact for full details

IACE Travel
[Beyond the Basics & The Golden Route](#)
Travel agent commission 5%

Inside Travel Group
[Japan Arts Trail Self-Guided Adventure](#)
Travel agent Commission 12%

JTB USA, Inc.
[Discover Hidden Japan & Visit Japan's Island of Art: Iya Valley, Naoshima, Kurashiki](#)

Please contact JTB for commission details

Mountain Hiking Holidays

[TWO Different Trips Hiking Hokkaido](#) & [Shikoku Temple Trek 1](#)

Travel agent commission 10%

NTA America Inc.

[Japan Discovery: 6 Day Tour](#)

Agent Commission 10%

Peony Tours

[Japan Discovery World EXPO](#) & [Hokkaido Retreat](#)

Travel agent commission 10% of the tour price

Free Photos, Brochures,
Hotel Search and More!



Photo



Brochure



Mice



Video

THE FINE PRINT/LEGAL STUFF

Information is provided in this Japan Travel Update as a courtesy to readers of this newsletter. Though JNTO endeavors to ensure the information is accurate, users of the information are to act on such using their own judgment and at their own risk. Neither JNTO nor any holder of a copyright to the information shall be held responsible in any way whatsoever for any loss or misunderstanding, either direct or indirect, that is incurred as a result of utilizing the information.



Publisher: Japan National Tourism Organization Los Angeles

URL: www.japan.travel/en/us

Los Angeles Office

6100 Center Drive, Suite 925, Los Angeles, CA 90045

email: infolax@jnto.go.jp

New York Office

250 Park Avenue, Suite 1900, New York, NY 10177

email: infonyc@jnto.go.jp

[View this email in your browser](#)

You are receiving this email because of your relationship with Japan National Tourism Organization. Please [reconfirm](#) your interest in receiving emails from us. If you do not wish to receive any more emails, you can [unsubscribe here](#).

This message was sent to nycdirectors@jnto.go.jp by us_trade_newsletter@jnto.go.jp

Japan National Tourism Organization New York Office 250 Park Avenue, Suite 1900, New York, NY 10177 email:

infonyc@jnto.go.jp Los Angeles Office 707 Wilshire Blvd., Suite 4325, Los Angeles, CA 90017 email:

infolax@jnto.go.jp

Verified UnsubscribeSM [Unsubscribe](#) | [Manage Subscription](#)





Japan Travel Newsletter

April Issue 2025

Japan's Greatest Places of 2025



TIME magazine has unveiled its prestigious "World's Greatest Places of 2025," and four exceptional destinations are in Japan! Discover Kumano Nachi Taisha, the Nintendo Museum, Nipponia, and Mirukashi Salon, showcasing ancient spirituality, gaming history, revitalized villages, and innovative sweets.

[LEARN MORE](#)

Plan Your Fuji Climb: New Rules



Climbing Mount Fuji this summer? Japan has new guidelines for the 2025 season to ensure safety and preserve the iconic peak. Plan for potential fees and daily climber limits. Check the official Fuji climbing website for the latest details before your trip.

[LEARN MORE](#)

Oita: Japan's Onsen Capital Awaits



Escape to Oita, Japan's premier onsen destination! Immerse yourself in world-famous healing hot springs amidst incredible landscapes. Experience true relaxation and authentic Japanese tradition. Discover why Oita is the ultimate wellness escape.

[LEARN MORE](#)

Discover Hamamatsu & Lake Hamana



Explore the charm of Hamamatsu and scenic Lake Hamana. Enjoy breathtaking lakeside vistas, delve into a world of musical instrument mastery, and taste exquisite local flavors. This vibrant region perfectly balances nature, culture, and ingenuity. Plan your unforgettable Japanese escape to Hamamatsu today!

[LEARN MORE](#)

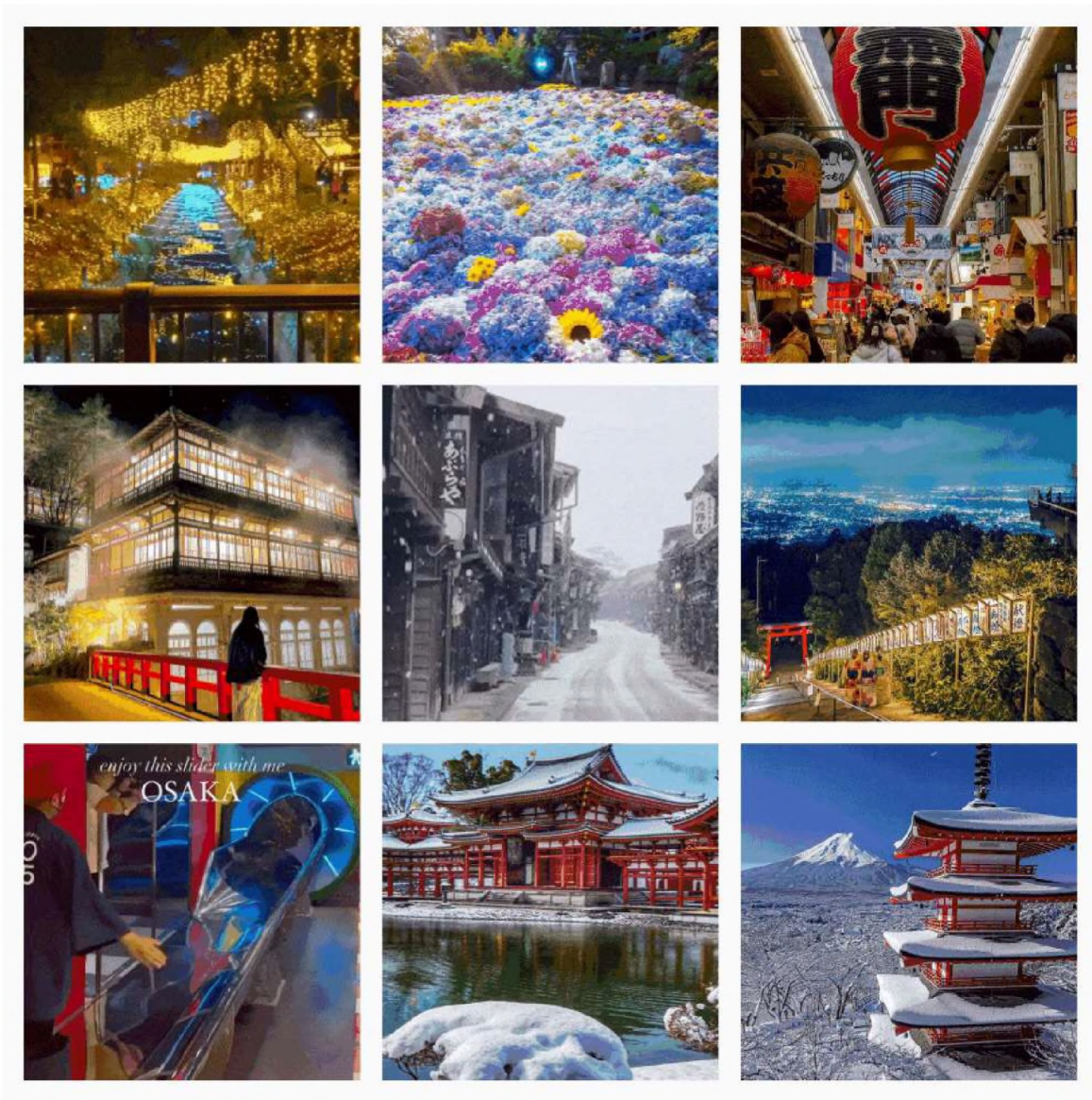
AI Ranks Japan Among World's Best!



Big news! Japan is featured on [Trip.com](https://www.trip.com)'s innovative "Top 100 Global Tourist Destinations," selected by AI. Discover the allure that placed Japan on this cutting-edge list. See why AI recommends Japan for your next unforgettable journey!

[LEARN MORE](#)

Follow [@visitjapan.us](https://twitter.com/visitjapan.us) for a daily dose of inspiration from Japan



EXPO 2025
OSAKA, KANSAI, JAPAN

[**LEARN MORE**](#)



Luxury

[**LEARN MORE**](#)



For First-Time Visitors

[LEARN MORE](#)

Airport Access

[LEARN MORE](#)

Getting Around

[LEARN MORE](#)



Publisher: Japan National Tourism Organization

URL: www.japan.travel/en/us

New York Office

250 Park Avenue, Suite 1900, New York, NY 10177

email: infonyc@jnto.go.jp

Los Angeles Office

6100 Center Dr, Suite 925, Los Angeles, CA 90045

email: infolax@jnto.go.jp

[View this email in your browser](#)

You are receiving this message because you requested information or voluntarily subscribed to our newsletter. Please do not reply to this message as replies to this email address are not read.

[Unsubscribe](#)





Japan Travel Newsletter

February Issue 2025

Japan's Spring Awakening: Cherry Blossom Forecast



The countdown to cherry blossom season has begun! Japan's iconic sakura are predicted to bloom starting in late March, painting the country in breathtaking shades of pink. Where will you experience hanami in 2025?

[LEARN MORE](#)

Japan 2025: Expo, Sports, and More!



Photo credit: Provided by Japan Association for the 2025 World Exposition

Japan takes center stage in 2025, hosting exciting global events! Experience innovation at Expo 2025 Osaka, witness world-class athletes at the World Athletics Championships in Tokyo, and celebrate inclusion at the TOKYO 2025 DEAFLYMPICS. Plan your 2025 Japan adventure now!

[LEARN MORE](#)

Sake, Shochu & Awamori: Discover Koji's Magic



Explore the world of traditional Japanese alcoholic beverages – sake, shochu, and awamori! Learn about the essential role of "koji" mold in their creation, visit local breweries and distilleries, and savor the unique flavors of these cultural treasures.

[LEARN MORE](#)

Sumo & Chanko: An Exclusive Experience



©TOKI

Experience the thrill of live sumo wrestling! Witness powerful morning training sessions and savor a traditional chanko nabe lunch with the wrestlers themselves. An unforgettable cultural immersion awaits!

LEARN MORE

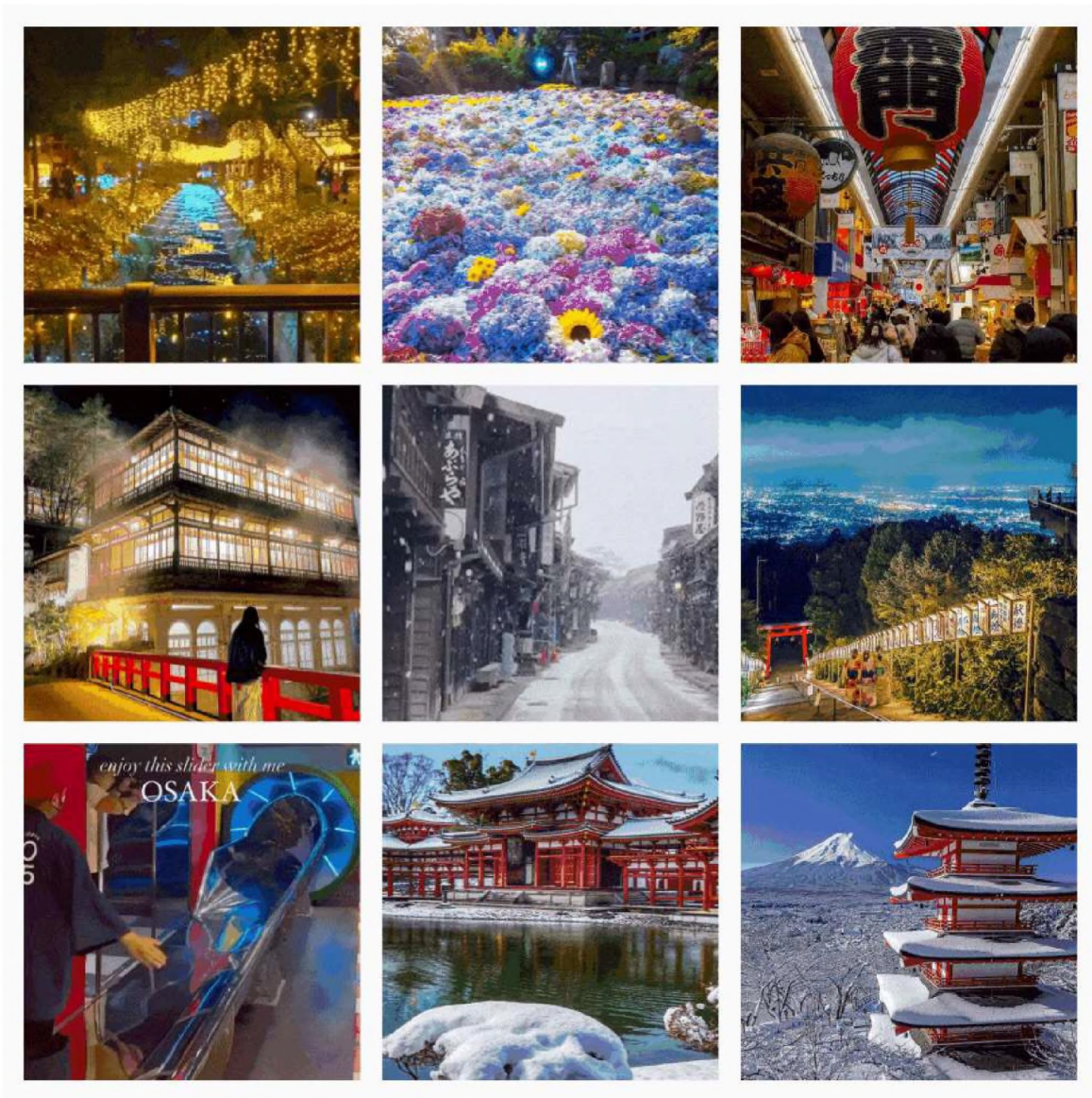
GATE HOTEL YOKOHAMA: Your Port City Oasis



Experience the vibrant energy of Yokohama at the new GATE HOTEL, opening February 26th! Enjoy stunning harbor views, stylish accommodations, and a rooftop terrace with breathtaking cityscape vistas. Explore nearby attractions like Chinatown and the Cup Noodles Museum.

LEARN MORE

Follow [@visitjapan.us](https://www.instagram.com/visitjapan.us) for a daily dose of inspiration from Japan



[LEARN MORE](#)



[LEARN MORE](#)



For First-Time Visitors

[LEARN MORE](#)

Airport Access

[LEARN MORE](#)

Getting Around

[LEARN MORE](#)



Publisher: Japan National Tourism Organization

URL: www.japan.travel/en/us

New York Office

250 Park Avenue, Suite 1900, New York, NY 10177

email: infonyc@jnto.go.jp

Los Angeles Office

6100 Center Dr, Suite 925, Los Angeles, CA 90045

email: infolax@jnto.go.jp

[View this email in your browser](#)

You are receiving this message because you requested information or voluntarily subscribed to our newsletter. Please do not reply to this message as replies to this email address are not read.

[Unsubscribe](#)





Japan Travel Newsletter

January Issue 2025

Toyama & Osaka: NYT's 52 Places to Go in 2025



Discover two of Japan's most exciting destinations! Toyama and Osaka cities have been selected for the New York Times' prestigious "52 Places to Go in 2025" list. Explore stunning natural beauty, vibrant cityscapes, and rich cultural experiences in these must-visit Japanese destinations.

[LEARN MORE](#)

Sustainable Stays: Eco-Friendly Travel in Japan



Discover Japan's commitment to sustainable tourism! Explore a curated selection of eco-friendly hotels and ryokans that prioritize environmental responsibility and community engagement. Experience authentic Japanese hospitality while minimizing your impact on the planet.

[LEARN MORE](#)

Discover Japan's Contemporary Art Scene



Photo credit: Exhibition in Tonomachi Togawa area in 2023 (work by Yoshihito Mizuuchi)

Explore the vibrant world of contemporary art in Japan! From large-scale international exhibitions to intimate local shows, discover exciting art festivals happening across the country in 2025. Immerse yourself in cutting-edge creativity and experience Japan's dynamic art scene.

[LEARN MORE](#)

Celebrate Spring Early: Kawazu Cherry Blossoms



©Kawazu Tourist Association

Celebrate spring's arrival at the Kawazu Cherry Blossom Festival in Shizuoka! From February 1st to 28th, 2025, enjoy vibrant blossoms, local delicacies, and festive events. Experience the magic of early cherry blossoms in Japan.

[LEARN MORE](#)

Experience Osaka's Tranquil New Luxury Hotel



Opening Spring 2025, Patina Osaka offers a serene escape in the heart of this vibrant city. Enjoy breathtaking views, luxurious accommodations, exquisite dining, and a unique vinyl Listening Room. Indulge in mindfulness experiences at Patina Wellness and explore nearby historical landmarks.

[LEARN MORE](#)

Japan Pop Culture Festival: POM 2025





[LEARN MORE](#)



[LEARN MORE](#)



[LEARN MORE](#)



For First-Time Visitors

[LEARN MORE](#)



Airport Access

[LEARN MORE](#)



Getting Around

[LEARN MORE](#)



Publisher: Japan National Tourism Organization

URL: www.japan.travel/en/us

New York Office

250 Park Avenue, Suite 1900, New York, NY 10177

email: infonyc@jnto.go.jp

Los Angeles Office

6100 Center Dr, Suite 925, Los Angeles, CA 90045

email: infolax@jnto.go.jp

[View this email in your browser](#)

You are receiving this message because you requested information or voluntarily subscribed to our newsletter. Please do not reply to this message as replies to this email address are not read.

[Unsubscribe](#)





Japan Travel Newsletter

June Issue 2025

Japan's 2025 Art Festivals



© Mit Jai Inn / Jim Thompson Foundation (Exhibition reference image for Aichi Triennale 2022)

Immerse yourself in Japan's vibrant 2025 art scene! Discover incredible festivals like the Setouchi Triennale and Echigo-Tsumari Art Triennale, where contemporary art meets stunning natural landscapes. Plan your cultural adventure today!

[LEARN MORE](#)

Japan's Guide to Pleasant Travel



Japan aims to make travel more enjoyable for everyone! New "Travel Etiquette for the Future" guidelines and pictograms help visitors understand local customs and navigate popular areas smoothly, promoting sustainable and respectful tourism. Learn more for a better trip!

[LEARN MORE](#)

Fairmont Arrives in Tokyo This Summer



Tokyo's luxury scene anticipates a stunning new arrival! Fairmont Hotels & Resorts will unveil its very first Japanese gem, Fairmont Tokyo, on July 1, 2025. Expect unparalleled opulence, sophisticated design, and the signature Fairmont service. A new era of luxury is dawning.

[LEARN MORE](#)

Capella Kyoto: Culture & Luxury



Coming Early 2026: Capella Kyoto debuts in the historic Miyagawa-chō district, in Gion. Designed by Kengo Kuma, this 89 room luxury hotel embodies Japanese artistry. Explore nearby temples, indulge at the Capella Spa with private onsen-style rooms, and savor unique dining. Experience Kyoto's cultural heart.

[LEARN MORE](#)

JUNGLIA OKINAWA: One of Japan's Largest Theme Parks Set to Open in Okinawa in July



©JUNGLIA2025-0252

JUNGLIA OKINAWA, which is going to open on July 25th, is one of a kind theme park where thrill meets luxury. From dinosaur encounters and ziplines to hot air balloons and gourmet dining with stunning views—experience outdoor excitement and indulgence like never before, all in one magical destination.

[LEARN MORE](#)

Follow [@visitjapan.us](#) for a daily dose of inspiration from Japan



[**LEARN MORE**](#)



[**LEARN MORE**](#)



For First-Time Visitors

[**LEARN MORE**](#)



Airport Access

[**LEARN MORE**](#)



Getting Around

[**LEARN MORE**](#)



Publisher: Japan National Tourism Organization

URL: www.japan.travel/en/us

New York Office

250 Park Avenue, Suite 1900, New York, NY 10177

email: infonyc@jnto.go.jp

Los Angeles Office

6100 Center Dr, Suite 925, Los Angeles, CA 90045

email: infolax@jnto.go.jp

[View this email in your browser](#)

You are receiving this message because you requested information or voluntarily subscribed to our newsletter. Please do not reply to this message as replies to this email address are not read.

[Unsubscribe](#)





Japan Travel Newsletter

March Issue 2025

Discover Japan with Adorable Yuru Kyara Guides



Meet Japan's charming regional mascots – the Yuru Kyara! From ramen-loving bears to leek-antlered fairies, these cuties embody local pride and are your perfect guides to exploring Japan's hidden gems, especially in the charming countryside. Let these adorable ambassadors inspire your next Japanese adventure.

[LEARN MORE](#)

Explore Noto Peninsula's Roadside Delights



Discover Noto Peninsula's charming Michi-no-Eki roadside stations! Savor fresh seafood, browse local crafts, and soak in stunning coastal views. These stops offer a unique way to experience local culture and support the region's recovery. Perfect for road trips and cycling adventures!

[LEARN MORE](#)

The Craft of Japanese Fashion



Photo Credit: © Okayama Prefectural Tourism Federation

From Tokyo's cutting-edge designs and trendy streets to Niigata's functional outdoor wear and Okayama's artisanal denim, Japan offers a unique fashion experience. Discover innovative brands, traditional craftsmanship, and your next favorite style.

[LEARN MORE](#)

Savor Japan's Royal Flavors: Miketsukuni



Embark on a culinary journey through Miketsukuni, the ancient lands that supplied Kyoto's Imperial Court. Discover Awaji Island, Ise-Shima, and Wakasa, savoring fresh seafood, regional delicacies, and stunning scenery. Complete your pilgrimage in Kyoto, where these flavors converge.

[LEARN MORE](#)

New Hiroshima Hotel: Gateway to Setouchi

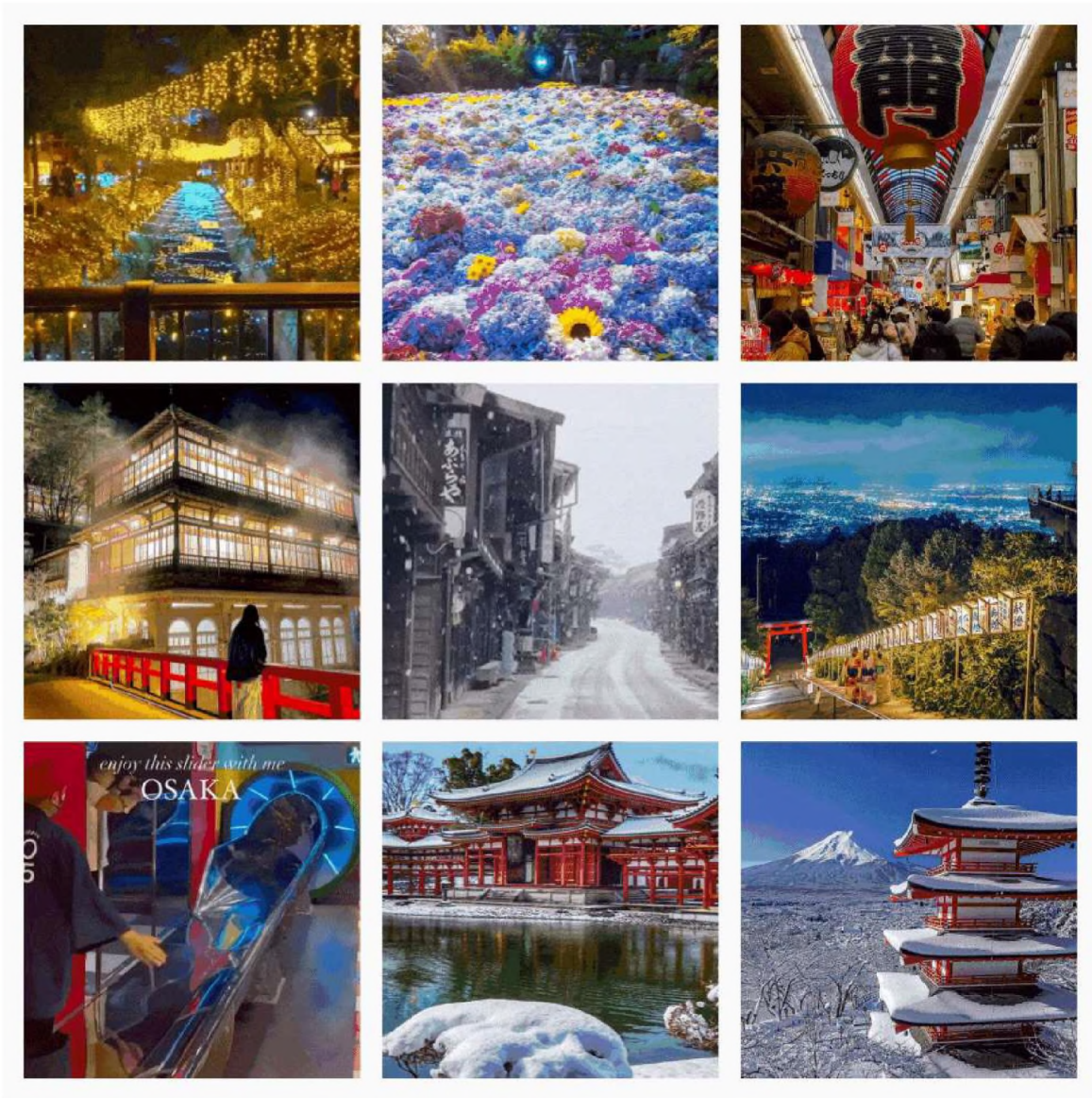


Credit: Hotel Granvia Hiroshima South Gate

Explore Hiroshima and the Setouchi region from the new Hotel Granvia Hiroshima South Gate, opening March 24th! Located directly above Hiroshima Station, this convenient hotel offers easy access to iconic sites like the Peace Memorial Park and Miyajima Island.

[LEARN MORE](#)

Follow [@visitjapan.us](#) for a daily dose of inspiration from Japan



[LEARN MORE](#)



[LEARN MORE](#)



For First-Time Visitors

[LEARN MORE](#)

Airport Access

[LEARN MORE](#)

Getting Around

[LEARN MORE](#)



Publisher: Japan National Tourism Organization

URL: www.japan.travel/en/us

New York Office

250 Park Avenue, Suite 1900, New York, NY 10177

email: infonyc@jnto.go.jp

Los Angeles Office

6100 Center Dr, Suite 925, Los Angeles, CA 90045

email: infolax@jnto.go.jp

[View this email in your browser](#)

You are receiving this message because you requested information or voluntarily subscribed to our newsletter. Please do not reply to this message as replies to this email address are not read.

[Unsubscribe](#)



This material is distributed by JNTO New York Office on behalf of Japan National Tourism Organization. Additional information is available at the at the Department of Justice, Washington, DC.

Japan Travel Newsletter

Special Issue 2025

Abercrombie & Kent: Luxury Holidays in Japan



Explore Japan in ultimate style with Abercrombie & Kent. From iconic cities and serene landscapes to exclusive cultural encounters, Abercrombie & Kent's luxury journeys offer unparalleled access to the best of Japan. Craft your dream trip today.

[LEARN MORE](#)

Kensington Tours: Japan Tours with a Local Private Guide



Explore Japan's rich culture and stunning landscapes with Kensington Tours' private guided journeys. Customize your itinerary, choose luxury accommodations, and experience authentic Japan with expert local guides.

[LEARN MORE](#)

Sky Vacations: Tradition, Culture & Adventure Awaits



Experience authentic Japan with Sky Vacations' personalized itineraries. Discover hidden gems, stay in charming ryokans, and enjoy curated experiences that reveal Japan's true spirit.

[LEARN MORE](#)

The Dragon Trip: Japan Solo Group Tours & Travel Packages



Explore Japan's electric cities and serene landscapes with The Dragon Trip's small group tours. Experience iconic festivals, immerse yourself in local culture, and create unforgettable memories with fellow travelers.

[LEARN MORE](#)

Pacific Holidays: Tailor-Made Japan



Craft your perfect Japan journey with Pacific Holidays. Design a custom itinerary tailored to your interests, explore hidden gems, and experience the best of Japan with expert guidance and personalized service.

[LEARN MORE](#)

Gate 1 Travel: 9 Day Classic Japan



Experience Japan's highlights on a 9-day escorted tour with Gate 1 Travel. Explore Tokyo, Kyoto, Hakone, and Mount Fuji with expert guides, comfortable accommodations, and seamless logistics. A classic Japan adventure awaits.

[LEARN MORE](#)

Follow [@visitjapan.us](#) for a daily dose of inspiration from Japan





[**LEARN MORE**](#)



[**LEARN MORE**](#)



For First-Time Visitors

[**LEARN MORE**](#)



Airport Access

[**LEARN MORE**](#)



Getting Around

[**LEARN MORE**](#)



Publisher: Japan National Tourism Organization

URL: www.japan.travel/en/us

New York Office

250 Park Avenue, Suite 1900, New York, NY 10177

email: infonyc@jnto.go.jp

Los Angeles Office

6100 Center Dr, Suite 925, Los Angeles, CA 90045

email: infofax@jnto.go.jp

[View this email in your browser](#)

You are receiving this message because you requested information or voluntarily subscribed to our newsletter. Please do not reply to this message as replies to this email address are not read.

[Unsubscribe](#)

